

LEVEL 01

6101 SLIGO MILL ROAD, NE
Washington DC

N NELSON ARCHITECTS
 1003 K STREET, NW
 WASHINGTON, DC 20001

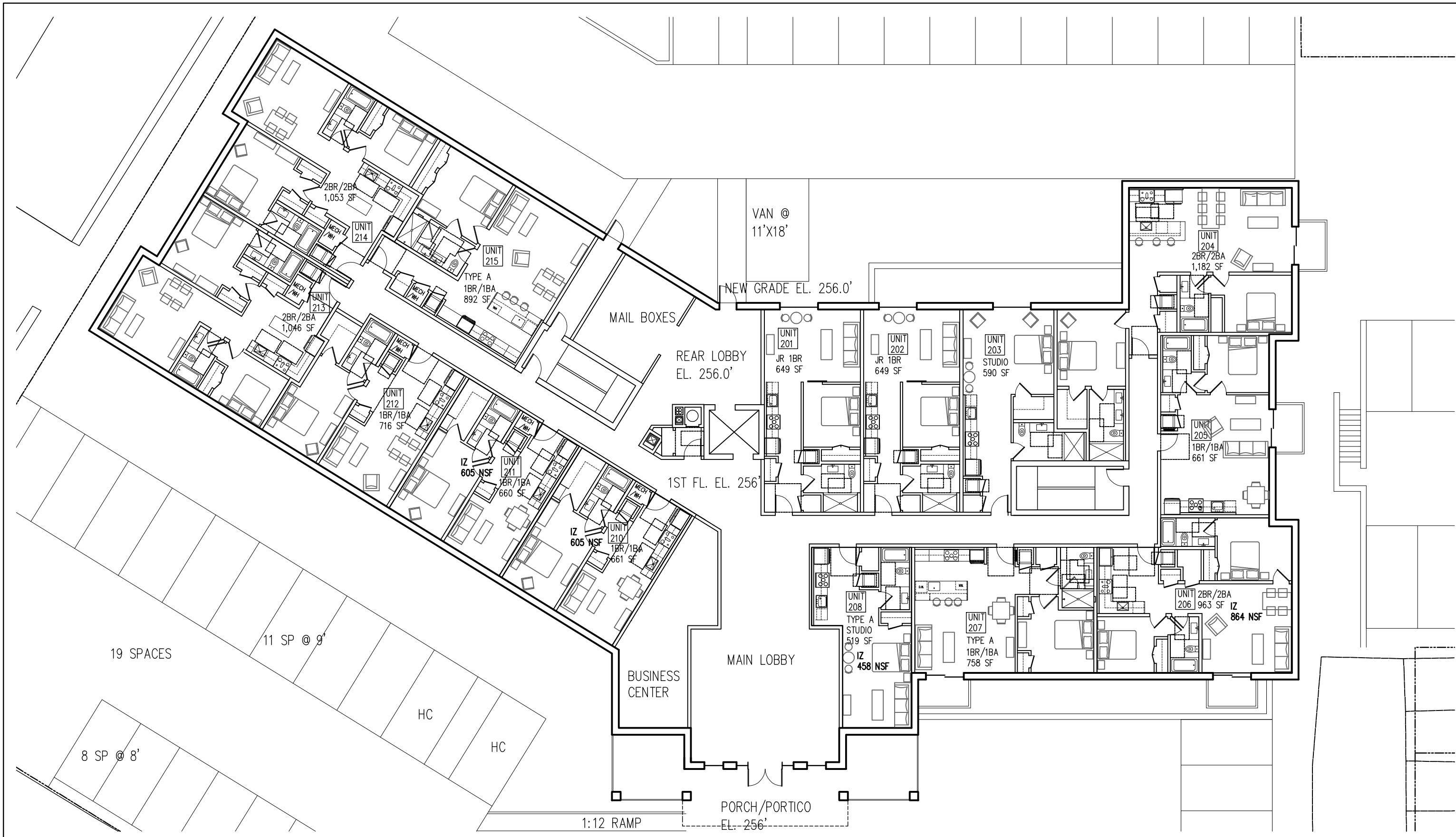
6101 SLIGO, LLC
 11 THOMAS POINT ROAD
 MIRROR LAKE, NH 08353

TEL 248.766.2254

CONCEPT 07.30.2021 - PUD SUBMISSION

TEL 202.737.4800

A1.20



LEVEL 02

6101 SLIGO MILL ROAD, NE
Washington DC

CONCEPT 07.30.2021 - PUD SUBMISSION

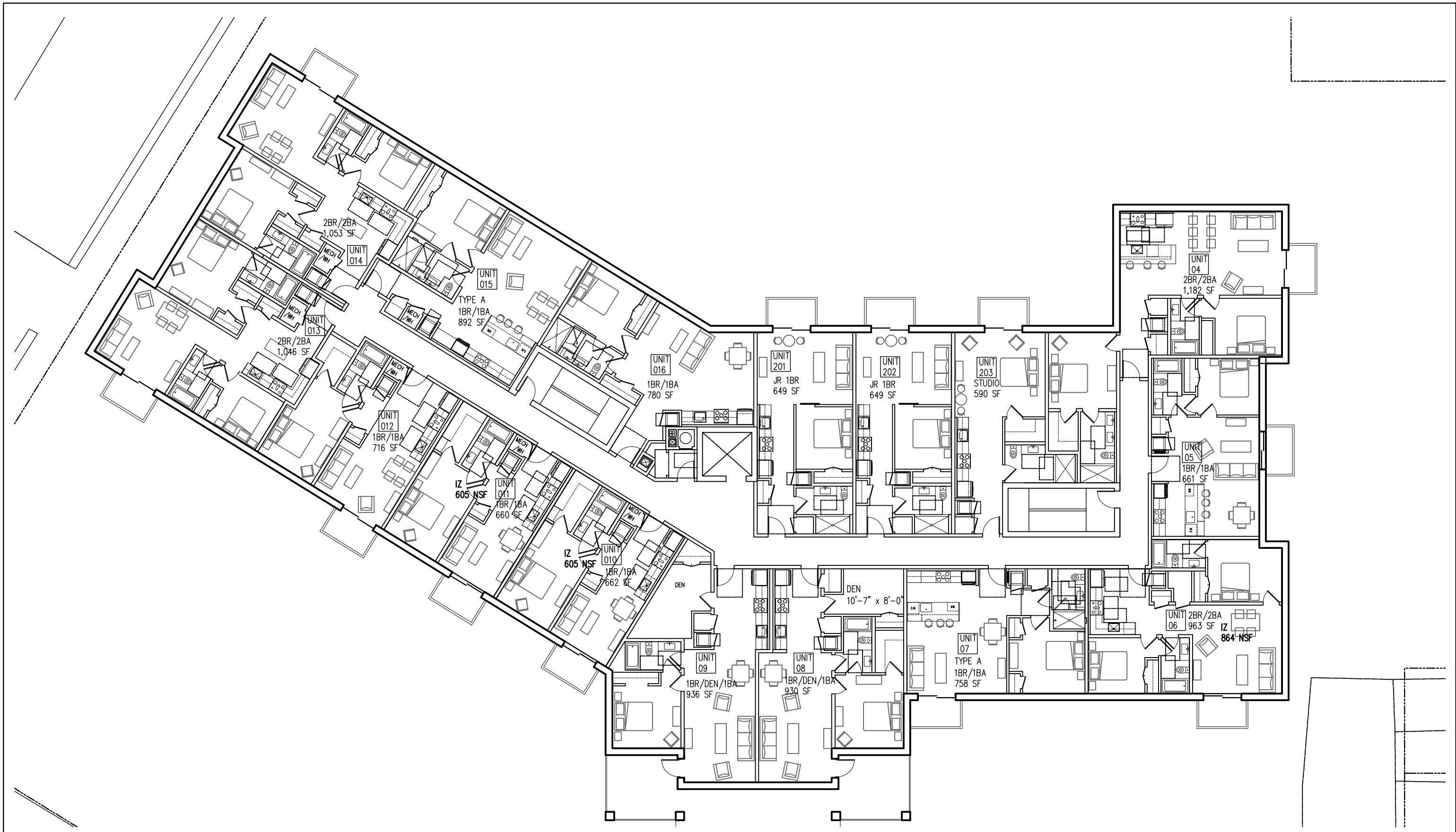
N NELSON ARCHITECTS
 1003 K STREET, NW
 WASHINGTON, DC 20001

TEL 202.737.4800

A1.21

6101 SLIGO, LLC
 11 THOMAS POINT ROAD
 MIRROR LAKE, NH 08353

TEL 248.766.2254



LEVELS 03 & 04

6101 SLIGO MILL ROAD, NE
Washington DC

N NELSON
ARCHITECTS
1003 K STREET, NW
WASHINGTON, DC 20001

6101 SLIGO, LLC
11 THOMAS POINT ROAD
MIRROR LAKE, NH 08353

TEL 248.766.2254

CONCEPT 07.30.2021 - PUD SUBMISSION

TEL 202.737.4800

A1.22